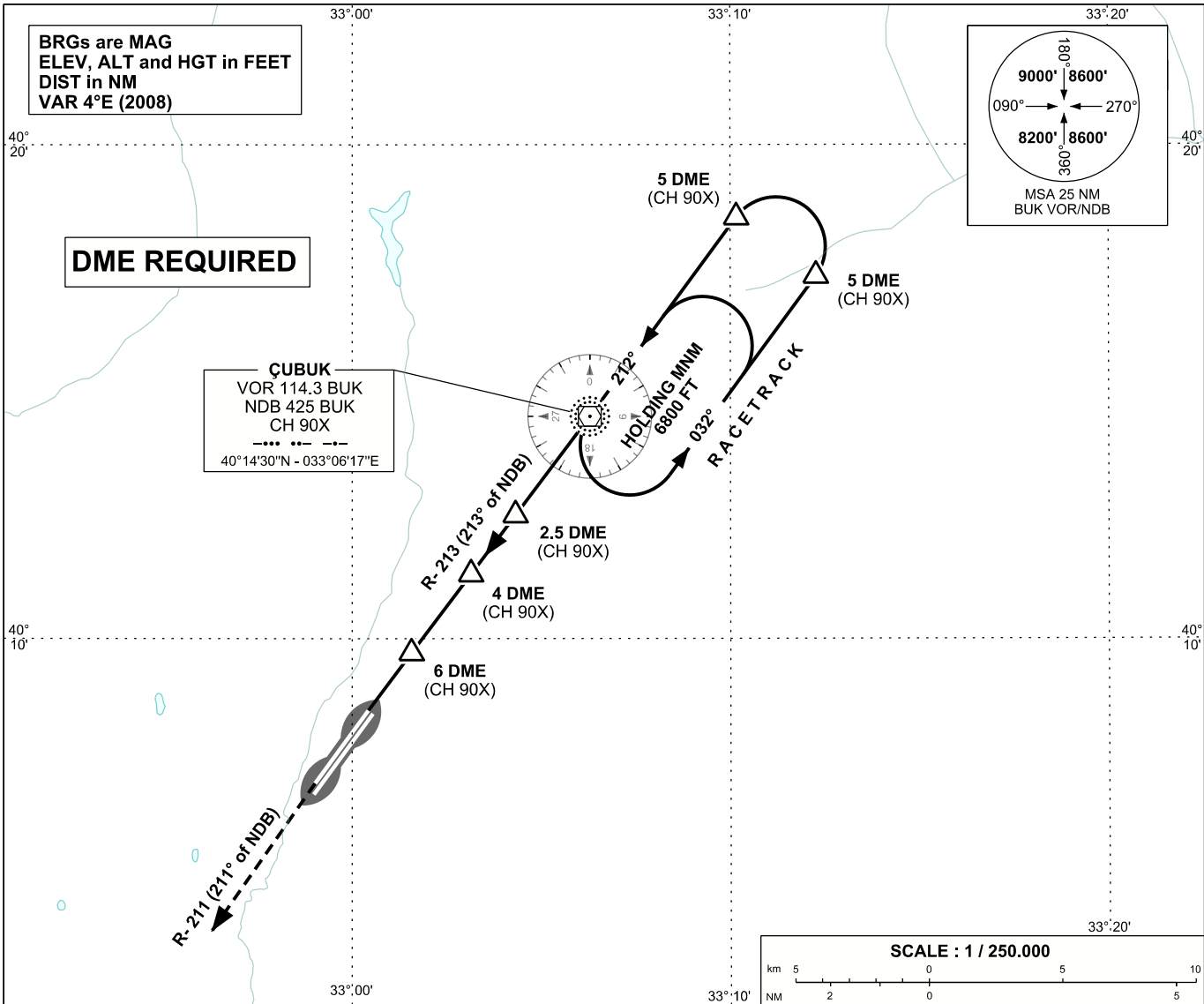


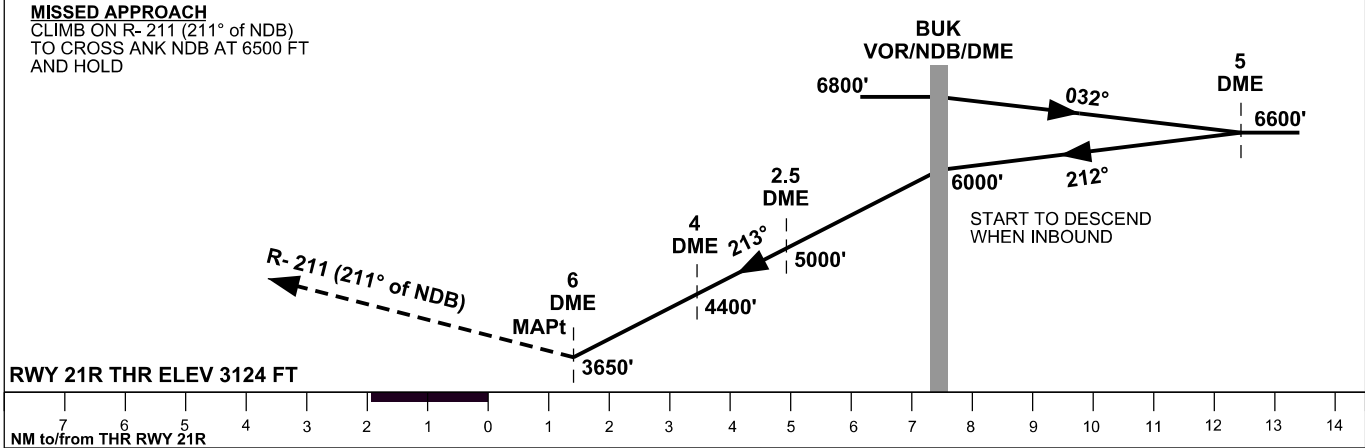
INSTRUMENT
APPROACH
CHART - ICAO

APP	119.6 - 119.1	AD ELEV	3127 FT
TWR	118.1 - 257.8	TRANSITION ALTITUDE	10 000 FT
ATIS	123.6		

ANKARA/ESENBOĞA
VOR Z, NDB Z
RWY 21R



MISSED APPROACH
CLIMB ON R- 211 (211° of NDB)
TO CROSS ANK NDB AT 6500 FT
AND HOLD



OCA (H)	A	B	C	D
Straight-in Approach	3650' (526')			
Circling	3800' (673')		4650' (1523')	

CHANGE: TWR, APP FREQUENCY